



DC 34.9 KIT COMPRISES

Electric Winch with emergency stop and safety solenoid; load limiting switch; 4.5m heavy duty 2 button wanderlead control; mounting bracket; industrial roller guides with greaseways; 10mm dia. x 30m galvanised wire rope (1960N/mm² grade) with safety latch hook.



Supplied with:
Emergency Stop, Safety Solenoid
and In-Cab Switch (not shown)

ADDITIONAL EQUIPMENT & SERVICES

- BHW WINCH CONTROL SYSTEM (see below)
- Electric isolator switch
- Auxiliary industrial 16 amp plug and socket kit for wanderlead connection
- Fuse and fuse holder
- Snatch block
- Radio Control Unit
- Full or partial fitting can be provided, including load testing and certification

UPGRADE TO A BHW WINCH CONTROL SYSTEM

Save time and money on installation - Ready to fit.

A choice of three alternative winch control kits designed to provide all in one emergency stop, isolator switch, safety solenoid and power outlets.

RAMSEY DC34.9 3.56 Tonne DC Electric Winch (12v or 24v)

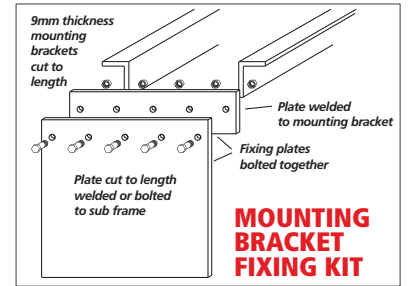
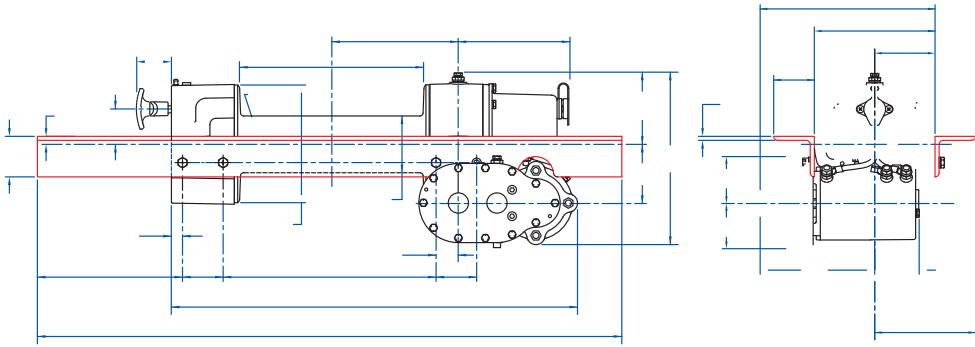
For Plant and Commercial Recovery Work

Ramsey's heaviest DC series electric winch designed to take on the very toughest recovery and plant loading work. A reputation for giving long life and complete reliability, ensures that the DC34.9 will withstand the hardest working environments.

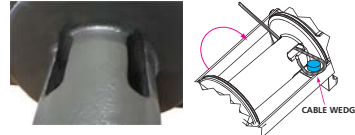
Fully compliant with EN 14492-1 regulations.

FEATURES INCLUDE

- **3558kgf line pull**
Rated line pull of 34.9 kN
- **EN 14492-1 compliant**
- **Emergency stop switch & safety solenoid**
Ensures shut down if control solenoid fails to open
- **Load limiting device**
Pre-set to provide mechanical overload protection
- **High carbon steel worm and phosphor bronze wheel drive**
Holds load safely without relying on a separate internal brake
- **Wedge pocket rope anchor on drum**
Major safety benefit - prevents rope release from drum
- **10mm x 30m (1960Nmm² grade) wire rope**
6 x 36 core construction for maximum flexibility
- **RAM-LOK freespool clutch mechanism**
Spring loaded for positive engagement
- **Heavy duty series wound motor**
12v and 24v models available
- **Heavy duty roller guides**
Industrial design for rugged commercial use
- **Mounting frame or cradle mount options**
For level floor mount or above deck
- **Heavy duty wanderlead control**
Industrial quality two button with 4.5m lead
- **Low amperage draw**
Practical and obtainable at rated line pull
- **After sales service**
Technical advice given on winch fitting and component replacement, plus efficient overnight parts despatch and fast repairs.



SECURE WIRE ROPE ANCHORAGE



LOAD LIMITING DEVICE

Electromechanical load limiting device provides overload protection. Electronic load limiting device also available (supplied as standard on cradle frame versions).

		LAYER		
		1	2	3
Maximum Rated Line Pull by Layer	kN	34.9	28.9	24.9
	kgf	3558	2947	2539
DC 34.9 Rope Capacity Cumulative by Layer (10mm Dia. Wire Rope)	m	9	20	32

SPECIFICATIONS

- Rated Line Pull:** 34.9 kN (3560kgf). EN 14492-1 compliant
- Line Speed:** 4.3 m/min.
- Wire Rope:** 10mm dia. x 30m 1960 Nmm² grade. 6 x 36 wire core construction. Min. breaking strain 6420kg
- Weight:** Machine weight: 53kg Complete Kit: 70kg
- Gear Reduction:** 470:1
- Winch Construction:** Aluminium die-cast end housings with steel drum, worm high carbon steel with phosphor bronze wheel designed for years of trouble free service.
- Motor:** 1.9 HP (12v) 2.5HP (24v) DC
- Drum:** 90mm diameter x 287mm or 213mm
- Protection:** Load limiting switch for overload protection
- Braking:** H/D self locking worm & wheel holds load until winch is powered out.
- Lubrication:** Worm and wheel and spur gears all run in oil baths
- Motor:** 1.9 HP (12v) 2.5HP (24v) DC
- Wanderlead Control:** Tough two button hand control with 4.5m lead. Other lengths available or with emergency stop on request.
- Roller Guides:** Heavy duty commercial type with greaseways.



NOTES

These winches must not be used for the movement of personnel and 5 wraps of wire rope must be maintained on the drum.
Data shown is approximate and intended as a guide only.

WARRANTY

Each new winch is guaranteed against defects in workmanship and material defects for a period of twelve months from date of purchase.
Wire ropes are not included under warranty.