

READY TO INSTALL

BENEFITS

- Enables a winch to be operated by a wanderlead control. A wanderlead socket is provided that can be positioned as required. Additional sockets can be provided as an option.
- Provides an Emergency Stop control - a legal requirement as defined by the EU machinery directive. Emergency Stop buttons are pre-wired into the control system and can be fitted adjacent to the heavy duty industrial socket.
- Multi Functional - if the control valve includes pressure carry over, then any additional equipment such as BHW Ramp Assist (for raising and lowering ramps) can also benefit from the Emergency Stop function. Additional Emergency Stop buttons can be provided.
- Pre-wired Radio Control can be supplied with the receiver connected into the control system.
- BHW Electro/Pneumatic Control Systems are supplied **READY TO INSTALL** - for time saving fitting.

The BHW system provides the highest levels of safety and ensures compliance with the EU machinery directive. The inlet port is normally open, until vehicle PTO is engaged. Pressure is then sensed in the control and the valve closes - ready to operate on command by wanderlead or with the manual standby lever provided. If it is necessary for the Emergency Stop to be activated, the supply is cut and the winch stops immediately. In the event of an electrical fault, the system will revert to Safe mode.

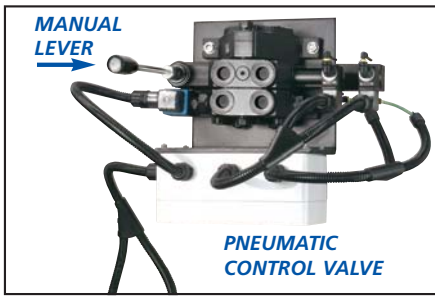
CONTROL VALVES

Integrated Electro/Pneumatic Winch Control System

Provides remote control for all Hydraulic Winches

FEATURES INCLUDE

- **Integrated fully wired system ready to install**
- **Wanderlead control**
With 7m cable and fitted with heavy duty industrial socket
- **Heavy duty auxiliary wanderlead socket**
Fitted with 9m cable length (additional sockets can be provided as required)
- **LED diagnostics**
Provided on operating and dump valve solenoids
- **Emergency stop - compliant with EU machinery directive**
Fitted adjacent to wanderlead socket. Will also protect other hydraulic equipment installed such as ramp operating rams
- **All wiring in protective flexible conduit**
- **Manual control lever**
Can be used as a stand by or for fine speed control
- **System provided on mounting bracket**
- **Valve and bracket painted black**
- **Radio control can be provided pre-wired into the control**
- **12 months warranty**
On parts and service (excluding wire rope)
- **Fitting service**
Full or partial fitting can be provided, including load testing and certification
- **After sales service**
Technical advice given on winch fitting and component replacement, plus efficient overnight parts despatch and fast repairs



MANUAL LEVER

PNEUMATIC CONTROL VALVE



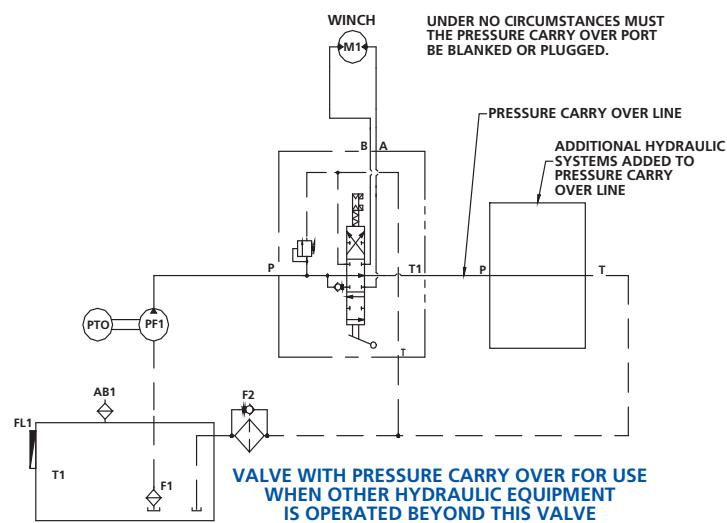
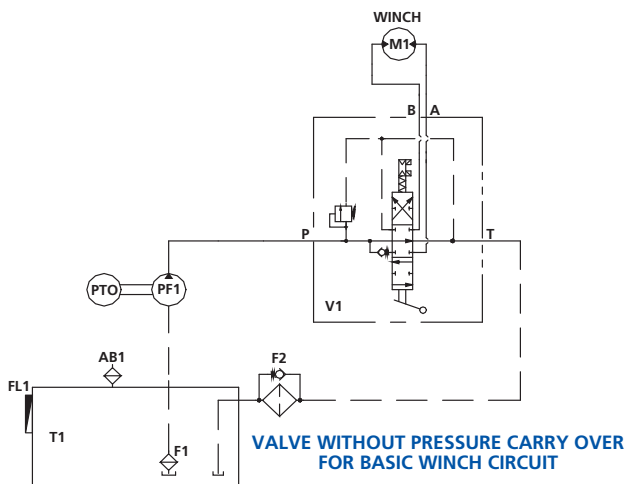
WANDERLEAD COUPLING



EMERGENCY STOP



WANDERLEAD



KIT PROVIDED INCLUDES

- Electro/pneumatic control valve with dump section
- Electronic control system in enclosure
- Wanderlead control with 7m lead and plug
- Wanderlead socket and emergency stop button connected to control system by 9m cables in flexible conduit protection
- Flexible conduit protected power lead connecting control system to vehicle battery with in-line fuse
- Mounting bracket with valve and control system fitted
- 4mm x 4m nylon tubing connecting air supply at

SPECIFICATIONS

Two options are available:

- 1/2" BSP Ported – Maximum permitted flow 60lt/min
Maximum operating pressure 350 bar
- 3/4" BSP Ported – Maximum permitted flow 100lt/min
Maximum operating pressure 350 bar

All valves include inlet pressure relief factory pre-set at 176 bar

24v electrical system standard. 12v available as option

Pre-connected battery leads with fuse supplied

Auxiliary wanderlead socket with 9m connecting wires

Emergency Stop provided in protective enclosure with 9m cable connection enabling installation to be adjacent to wanderlead socket

All cables provided in tough, flexible plastic conduit

Nylon tubing 4mm x 4m is included to connect to air supply at the PTO and the control system

Any option of multi sectional valve is available.

Please ask the BHW Group sales department for systems to meet your specific requirements

CONTROL SYSTEMS MUST BE SPECIFIED WITH OR WITHOUT PRESSURE CARRY OVER AND IT IS ESSENTIAL THAT THE CORRECT TYPE IS REQUESTED WHEN ORDERS ARE PLACED.

Bushey Hall Winchmaster sales@bhwgroup.co.uk www.bhwgroup.com

Southern Office: Lismirrane Industrial Park, Elstree Road, Elstree, Herts, WD6 3EE Tel: +44 (0)20 8953 6050 Fax: +44 (0)20 8207 5308

Northern Office: 6 South Orbital Trading Park, Hedon Road, Hull, East Yorkshire, HU9 1NJ Tel: +44 (0)1482 223 663 Fax: +44 (0)1482 218 285

Bushey Hall Winchmaster is a division of BHW Group Limited. Registered in England No. 1342461



CERT. No. 1769